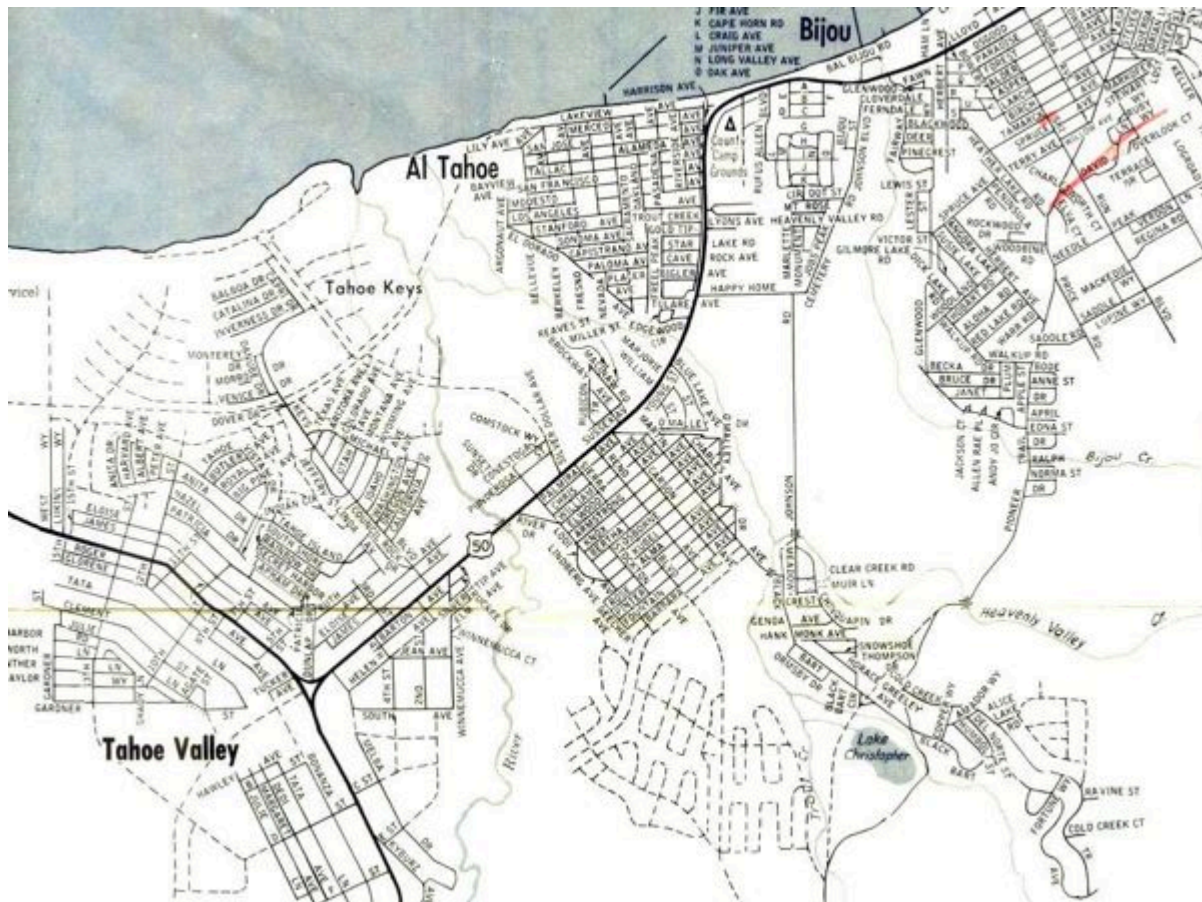



Then and now: Map of yesteryear a bit outdated



I guesstimate this map to be dated about 1961, issued by the then-chamber of commerce.

Notice the Y was still a Y. Tahoe Keys is naked. Al Tahoe Boulevard didn't exist, nor much of Pioneer Trail.

And some of those planned streets represented by dashes never happened.



Map of
LAKE TAHOE
Recreational Area
and
SOUTH TAHOE
Street Map

MILEAGE TO LAKE TAHOE
General points on the Lake

From Sacramento via Auburn	127 miles
From Sacramento via Placerville	120 miles
From Reno via Carson City	48 miles
From Reno via Carson City	48 miles
From San Francisco via Sacramento and Auburn	236 miles
From San Francisco via Sacramento and Placerville	230 miles
From Los Angeles via Shasta Valley and Carson City	493 miles
From Los Angeles via Sacramento and Placerville	485 miles
From Los Angeles via Sacramento and Auburn	488 miles
From Los Angeles via San Francisco and Auburn	485 miles
From Los Angeles via San Francisco and Placerville	473 miles
From Lake City via	
U.S. Highway 50	177 miles
Via U.S. Highway 50	178 miles
From Phoenix via Boulder Dam, Las Vegas and Reno	488 miles
From Portland via Astoria, Lewiston, 100 miles to	178 miles
the lake, 100 miles to Truckee and 100	178 miles
miles to Truckee and 100	178 miles

LAKE TAHOE SOUTH SHORE
CHAMBER OF COMMERCE
P. O. Box 350—Al Tahoe KI 6-6408

The map to the left from the Lake Tahoe South Shore Chamber of Commerce shows the increase of roads and places to play.

— Bill Kingman